



# SUNGSHIN

## WOMEN'S UNIVERSITY

SUNGSHIN EMPOWERS YOU  
YOU CHANGE THE WORLD

# 1 UNIVERSITY, 2 CAMPUSES

Located in Seoul, capital city of the **Republic of Korea**

Sungshin Women's University is located in the central downtown area of Seoul, capital of the Republic of Korea.

Our 2 campuses are located within 5 kilometers distance and easily accessible by university shuttle, city bus and subway.



# SUNGSHIN achieves

591-600<sup>th</sup> in

2023 QS World University Rankings



- 1st debut in QS World University Rankings

- Sungshin sends approximately 500 students abroad to partner universities every year, which is up to 20% of first year student population



# INTERNATIONAL EDUCATION QUALITY ASSURANCE SYSTEM (IEQAS)

- Selected by the Korean Ministry of Education as “Excellent IEQAS University”
- 8 consecutive years of highest level accreditation
- As of 2022, 19 four-year universities out of 400 Korean higher education institutions have “Excellent IEQAS University” status
- International Students benefit from
  - 1) Simplified Visa procedures
  - 2) Expanded admission opportunities
  - 3) Academic and Career counseling



# Global Korea Scholarship(GKS) at *Sungshin Women's University*

Sungshin has been selected by the National Institute of International Education (affiliated with the Korean Ministry of Education) to award Global Korea Scholarship to international students.

## • PROGRAMS OFFERED

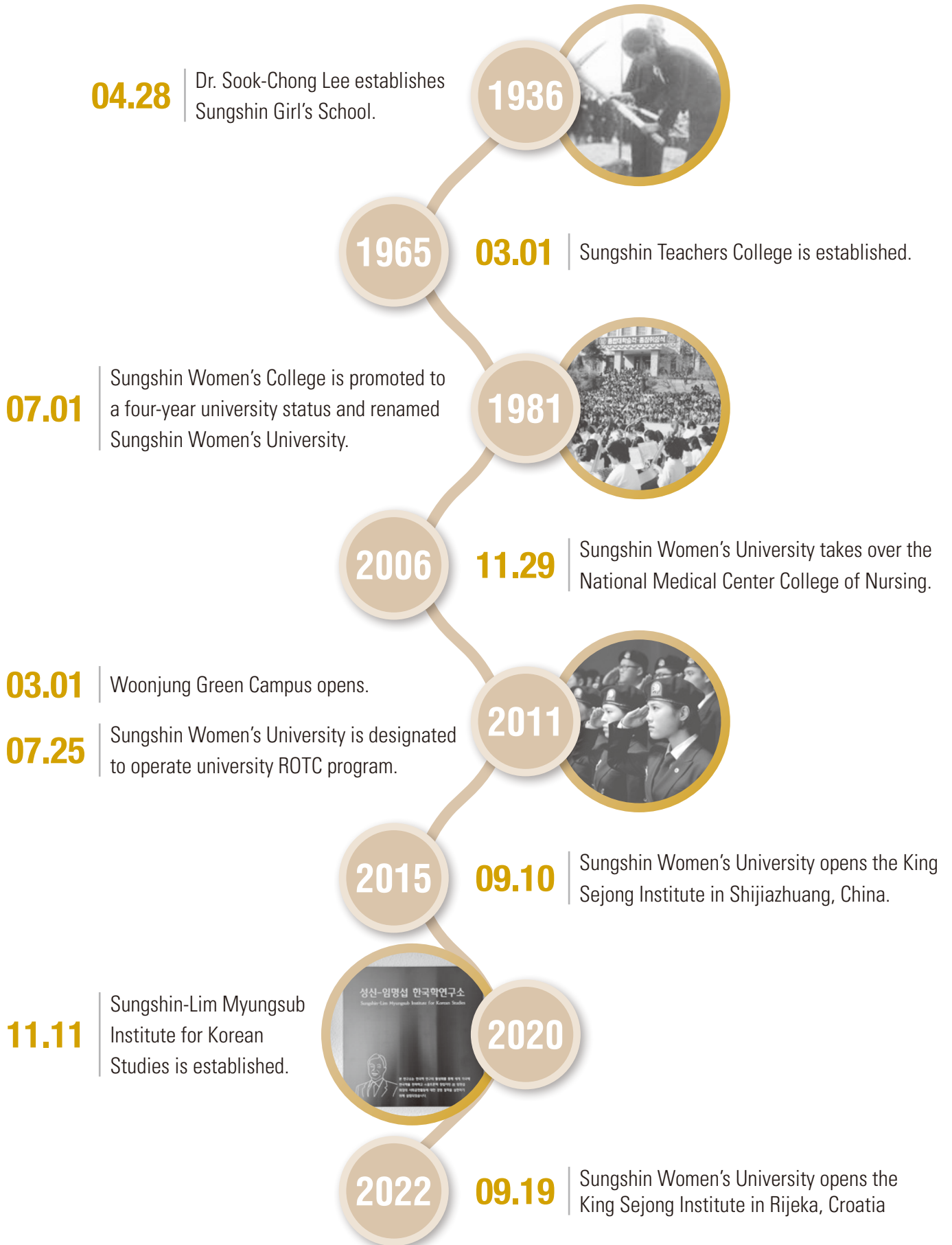
No	TYPE	PROGRAM AT SUNGSHIN
1	Global Korea Scholarship	Degree-seeking Undergraduate, Master's, Ph.D. & Korean Language Program
2	Global Korea Scholarship Invitation Program for International Students	Undergraduate Fee-paying students from partner universities
3	Korean Government Support Program for Foreign Exchange Students	Undergraduate Exchange students from partner universities
4	Korea-Japan Joint Higher Education Student Exchange Program	Degree-seeking Undergraduate, Master's, Ph.D. & Short-term program for Japanese students

## • Scholarship Benefits

- Scholarship towards tuition-fee
- Financial support for accommodation, flight ticket, insurance



# History of SUNGSHIN



# UNIVERSITY QUICK FACTS

## Academic Programs

### UNDERGRADUATE

13

COLLEGES

49

DEPARTMENTS/SCHOOLS

### GRADUATE

Master's Degree Programs

65

MAJORS

Doctoral Degree Programs

34

MAJORS

Intergrated Master/  
Doctoral Degree Programs

30

MAJORS

## Enrollment (2021)

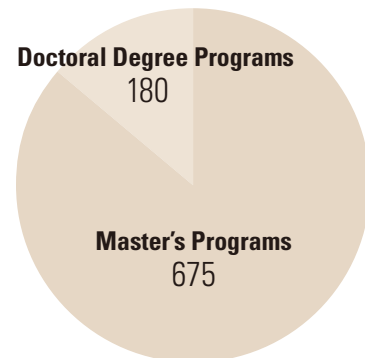
### UNDERGRADUATE

10,013



### GRADUATE

855



# UNDERGRADUATE COLLEGES

13 COLLEGES

49 DEPARTMENTS/SCHOOLS

COLLEGE	DEPARTMENT
<b>College of Humanities</b>	Department of Korean language and Literature Department of English language and Literature Department of German Language, Literature and Culture Department of French Language, Literature and Culture Department of Japanese Language, Literature and Culture Department of Chinese Language, Literature and Culture Department of History
<b>College of Social Sciences</b>	Department of Political Science and Diplomacy Department of Psychology Department of Geography Department of Economics Department of Media Communication School of Business Administration (Business Administration Major, Global Business Major) Department of Social welfare
<b>College of Law</b>	School of Law
<b>College of Natural Sciences</b>	School of Mathematics, Statistics and Data Science (Mathematics Major, Statistics Major, Big Data Science Major, Financial Technology Major) School of Chemistry and Energy (Chemistry Major, Smart Energy Major)
<b>College of Nursing Science</b>	Department of Nursing Science
<b>College of Education</b>	Department of Education Department of Social Studies Education Department of Ethics Education Department of Chinese Classics Education Department of Early Childhood Education
<b>College of Arts</b>	Department of Oriental Painting Department of Western Painting Department of Sculpture Department of Crafts Department of Industrial Design
<b>College of Music</b>	Department of Vocal Music Department of Instrumental Music Department of Composition
<b>College of Knowledge-Based Services Engineering</b>	Department of Computer Engineering Department of Convergence Security Engineering Department of Services and Design Engineering Department of Food Science and Biotechnology Department of Biotechnology Department of Environment & Energy Engineering School of AI Convergence (Artificial Intelligence Major, Intelligent IoT Major)
<b>Health &amp; Wellness College</b>	Department of Global Medical Science Department of Social welfare School of Biopharmaceutical and Medical Sciences (Biopharmaceutical Science Major, Global Medical Science Major) School of Bio-Health Convergence (Bio-Health Service Major, Food and Nutrition Major) School of Sports Science (Sports and Leisure Major, Exercise Rehabilitation Major)
<b>College of Convergence culture and arts</b>	Department of Contemporary Music Department of Culture & Art Management Department of Dance Art Department of Make-up Design Department of Acting for Visual Media
<b>International College of Beauty and Living Industry</b>	Department of Fashion Industry Department of Beauty Industry Department of Consumer Science and Living Culture Industry Department of Global Business



# GRADUATE COLLEGES

**65** MASTER'S DEGREE PROGRAMS

**38** DOCTORAL DEGREE PROGRAMS

**30** INTERGRATED MASTER / DOCTORAL DEGREE PROGRAMS

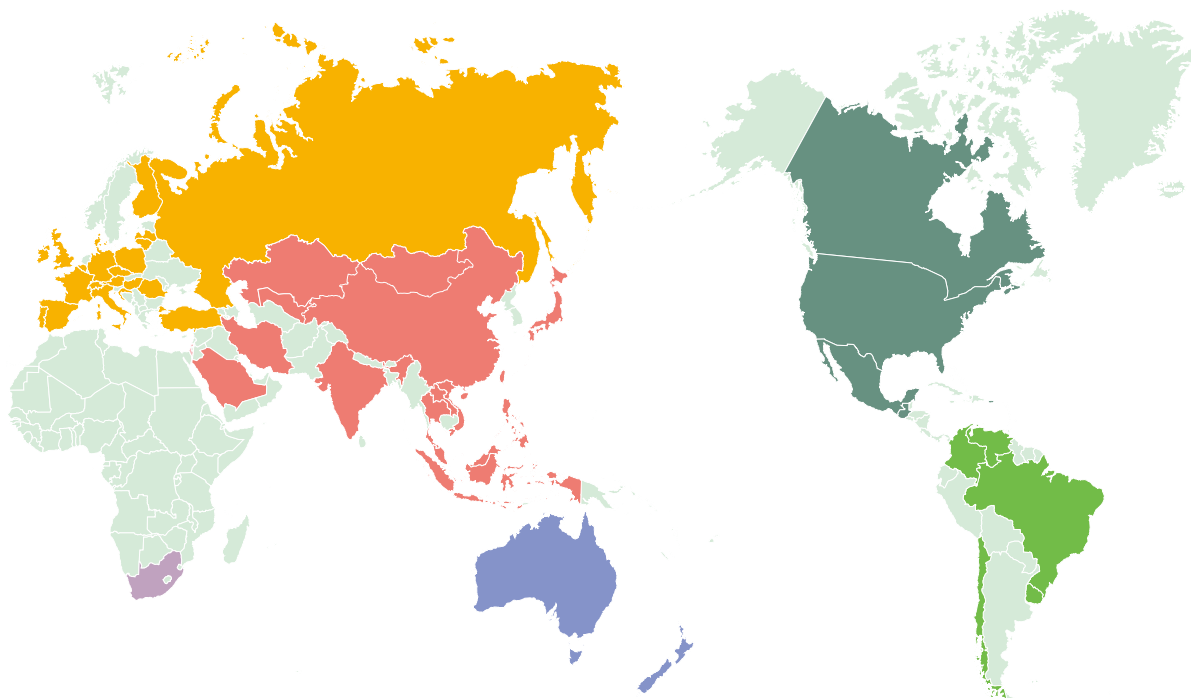
COURSE	DIVISION	DEPARTMENT(MAJOR)
<b>Master's Degree</b>	Humanities	Department of Korean Language and Literature(including Korean Language Culture Education Major), Department of English Language and Literature, Department of German Language and Literature, Department of French Language and Literature, Department of Japanese Language and Literature, Department of Chinese Language and Literature, Department of Chinese Classics, Department of History, Department of the History of Art, Department of Law, Department of Political Science and Diplomacy, Department of Psychology, Department of Geography, Department of Economics, Department of Business Administration, Department of Education, Department of Ethics, Department of Early Childhood Education, Department of Living Culture and Consumer Science, Department of Social Welfare, Department of Media Communication
	Natural Sciences	Department of Mathematics, Department of Chemistry, Department of Biology, Department of Next Generation Applied Sciences, Department of Statistics, Department of Computer Science, Department of Clothing & Textiles, Department of Food and Nutrition (including Clinical Dietitian Major), Department of Nursing(including Senior Nursing Program)
	Engineering	Department of Future Convergence Technology Engineering
	Arts and Sports	Department of Oriental Painting, Department of Western Painting, Department of Sculpture, Department of Crafts, Department of Printmaking, Department of Industrial Design, Department of Music(Vocal, Instrumental, Composition Majors), Department Accompanying Music, Department of Physical Education, Department of Beauty Industry
	Joint Programs	Department of Music Therapy
<b>Doctoral Degree</b>	Humanities	Department of Korean Language and Literature, Department of English Language and Literature, Department of German Language and Literature, Department of Chinese Classics, Department of History, Department of the History of Art, Department of Law, Department of Political Science and Diplomacy, Department of Psychology, Department of Geography, Department of Economics, Department of Business Administration, Department of Education, Department of Early Childhood Education, Department of Living Culture and Consumer Science, Department of Social Welfare, Department of Media Communication
	Natural Sciences	Department of Chemistry, Department of Biology, Department of Next Generation Applied Sciences, Department of Computer Science, Department of Clothing & Textiles, Department of Food and Nutrition, Department of Nursing
	Engineering	Department of Future Convergence Technology Engineering
	Arts and Sports	Department of Physical Education, Department of Art (Oriental Painting, Western Painting, Sculpture, Crafts, Industrial Design, and Multiple Art & Technology Majors), Department of Music (Vocal, Instrumental, Accompanying Music, Composition, and Musicology Majors), Department of Beauty Industry
<b>Intergrated Master/ Doctoral Degree</b>	Humanities	Department of Korean Language and Literature, Department of English Language and Literature, Department of German Language and Literature, Department of Chinese Classics, Department of History, Department of the History of Art, Department of Law, Department of Political Science and Diplomacy, Department of Psychology, Department of Geography, Department of Economics, Department of Business Administration, Department of Education, Department of Early Childhood Education, Department of Living Culture and Consumer Science, Department of Social Welfare, Department of Media Communication
	Natural Sciences	Department of Chemistry, Department of Biology, Department of Next Generation Applied Sciences, Department of Computer Science, Department of Clothing & Textiles, Department of Food and Nutrition, Department of Nursing
	Engineering	Department of Future Convergence Technology Engineering
	Arts and Sports	Department of Music (Vocal, Instrumental, Composition Majors), Department of Physical Education, Department of Beauty Industry
<b>GRADUATE SCHOOL OF EDUCATION</b>		
<b>Master's Degree</b>	Department of Education(Korean Language Education Major, English Language Education Major, Mathematics Education Major, Early Childhood Education Major, Fine Arts Education Major, Music Education Major, Counseling Psychology Major, Nutrition Education Major)	
<b>GRADUATE SCHOOL OF CONVERGENCE BEAUTY</b>		
<b>Master's Degree</b>	Department of Convergence Beauty (Make-up and Special Effects Make-up Major, Skincare and Obesity Major, Cosmetics Major, Beauty and hair care Major)	
<b>GRADUATE SCHOOL OF CULTURAL INDUSTRY AND ARTS</b>		
<b>Master's Degree</b>	Department of Cultural Industry and Arts(Aviation Service Management Major, Public Art Major, Korean Cultural Contents Major, Cultural Narrative Contents Creation Major, Entrepreneurship & Cultural Business Major, Performing Arts Major, Expressive Arts Therapy Major)	
<b>GRADUATE SCHOOL OF LIFETIME WELFARE</b>		
<b>Master's Degree</b>	Department of Child Care and Education(Child Care and Education Major) Department of Health and Exercise Management(Health and Exercise Management Major) Department of Real Estate(Real Estate Management Major)                      Department of Food and Nutrition(Clinical Dietetics Major)	

# SUNGSHIN'S GLOBAL PARTNERSHIPS AND NETWORK

55 COUNTRIES

270 UNIVERSITIES

(As of 2022.09.01)



## Europe

<b>Austria</b>	Universität Wien	<b>Lithuania</b>	LCC International University / Lithuanian University of Health Sciences
<b>Belgium</b>	University of Liege	<b>Poland</b>	SWPS University of Social Sciences and Humanities
<b>Bosnia Herzegovina</b>	University of Banja Luka	<b>Portugal</b>	Polytecnic Institute of Porto
<b>Croatia</b>	University of Rijeka / University of Zagreb	<b>Romania</b>	Romanian-American University / University of Bucharest / Universitatea Creștină "Dimitrie Cantemir"
<b>Czech Republic</b>	Masaryk University / University of Ostrava	<b>Russia</b>	Far Eastern Federal University / Irkutsk State University / Kazan Federal University / Sakhalin State University / Saint Petersburg State University / Vladivostok State University of Economics and Service
<b>Denmark</b>	University of Copenhagen	<b>Serbia</b>	University of Kragujevac
<b>Finland</b>	University of Turku	<b>Spain</b>	Universidad Católica San Antonio de Murcia / Universidad de Salamanca
<b>France</b>	College de Paris / Institut Supérieur de Management et Communication (ISMAC) / Université Le Havre Normandie / Université Grenoble Alpes / Université de Pau et des Pays de l'Adour / Université de Reims Champagne-Ardenne / Université de Franche-Comte	<b>Switzerland</b>	University of Lucerne
<b>Georgia</b>	Georgian-American University	<b>Turkey</b>	Ankara University / Nigde Omer Halisdemir University
<b>Germany</b>	Albert-Ludwigs-Universität Freiburg / Aschaffenburg University of Applied Sciences / Freie Universität Berlin / Katholische Universität Eichstätt-Ingolstadt / Universität Kassel / University of Cologne / Universität Trier	<b>United Kingdom</b>	Brunel University London / Edinburgh Napier University / Girton College, Cambridge / Saint Mary's University, Twickenham London / University of Portsmouth / University of Roehampton / University of the Arts London / York St. John University
<b>Hungary</b>	Liszt Ferenc Academy of Music / Tomori Pal College	<b>Africa</b>	
<b>Ireland</b>	Dublin City University	<b>Egypt</b>	Ain Shams University
<b>Italy</b>	Conservatorio di Milano / Conservatorio di Musica Umberto Giordano / Istituto Europeo di Design, IED / Sapienza Università di Roma / University of Foggia / Università Europea di Roma	<b>South Africa</b>	Stellenbosch University
<b>Latvia</b>	Ventspils University of Applied Sciences		

<b>Asia</b>	
<b>Brunei</b>	Universiti Brunei Darussalam
<b>China</b>	Anhui University of Finance & Economics / Bohai University / Central China Normal University / China Central Academy of Fine Arts / China Women's University / Communication University of China / Dalian Nationalities University / Dalian University of Foreign Languages / East China Normal University / East China University of Science and Technology / East University of Heilongjiang / Eastern Liaoning University / Gansu University of Traditional Chinese Medicine / Guangdong University of Foreign Studies / Guangzhou Academy of Fine Arts / Harbin Cambridge University / Harbin Engineering University / Harbin Institute of Technology (Weihai) / Harbin Normal University / Harbin University of Science and Technology / Hebei Institute of Communication / Hebei Normal University / Hebei University of Science and Technology / Hebei Women's Vocational College / Heilongjiang University / Hunan Normal University / Jilin Animation Institute / Jilin Huaqiao Foreign Languages Institute / Jilin University / Langfang Teachers University / Lanzhou University / Linyi University / Luoyang Institute of Science and Technology / Mudanjiang Normal University / Nanjing University of Finance and Economics / North China Institute of Aerospace Engineering / Northeast Normal University / Ocean University of China / Shandong Youth University of Political Science / Shandong Institute of Business and Technology / Shandong University at Weihai / Shanghai Art & Design Academy / Shanghai International Studies University / Shanghai Normal University / Shenzhen University / Sichuan Normal University / South China Normal University / Southwest University / Sun Yat-sen University / Sun Yat-sen University, Zhuhai / United International College(UIC) / Xi'an International Studies University / Xi'an Polytechnic University / Zhangzhou College of Science & Technology / Zhejiang Fashion Institute of Technology / Zhejiang Gongshang University / Zhejiang International Studies University / Zhejiang University
<b>China(Hong Kong)</b>	The University of Hong Kong
<b>China(ROC)</b>	Chinese Culture University / Feng Chia University / Fujen Catholic University / National Chung Cheng University / National Quemoy University / National Taiwan Normal University / National University of Kaohsiung / Shih Chien University / Shu-Te University / Soochow University / Tainan National University of The Arts / Taipei National University of the Arts / Tamkang University
<b>India</b>	Manipal Academy of Higher Education / University of Hyderabad
<b>Indonesia</b>	Universitas Gadjah Mada / University of Indonesia
<b>Iran</b>	University of Mazandaran
<b>Israel</b>	Jerusalem Rubin Academy
<b>Japan</b>	Beppu University / Bunkyo University / Chiba University / Dokkyo University / Doshisha University / Doshisha Women's College / Gakushuin Women's University / Hosei University / J.F.Oberlin University / Joshibi University of Art and Design / Kagawa University / Kanagawa University / Kanda University of International Studies / Kansai University / Konan Women's University / Kyoto Women's University / Saga Women's Junior College / Seinan Gakuin University / Sendai Shirayuri Women's College / Showa Women's University / Tokyo Woman's Christian University / Tsukuba Gakuin University
<b>Kazakhstan</b>	Al-Farabi Kazakh National University / Kurmangazy Kazakh National Conservatory / Kazakh State Women's Teacher Training University
<b>Laos</b>	National University of Laos
<b>Malaysia</b>	Management & Science University / University of Malaya / Universiti Teknologi Malaysia
<b>Mongolia</b>	Ulaanbaatar University
<b>Philippines</b>	Silliman University / University of the Philippines Diliman
<b>Saudi Arabia</b>	Royal Embassy of Saudi Arabia
<b>Thailand</b>	Burapha University / Chiang Mai University
<b>Uzbekistan</b>	Andijan State University / Samarkand State University / Tashkent Pediatric Medical Institute / Tashkent State Pedagogical University Named After Nizami / The Uzbekistan State Institute of Arts and Culture / Uzbekistan State World Languages University / Yeouju Technical Institute in Tashkent
<b>Vietnam</b>	Diplomatic of Academy of Vietnam / Hanoi Polytechnic College / Hanoi University of Culture / University of Economics, The University Of Danang / Vietnam National Institute of Culture and Arts Studies
<b>Oceania</b>	
<b>Australia</b>	Griffith University / RMIT University (Royal Melbourne Institute of Technology)
<b>New Zealand</b>	Ara Institute of Canterbury / The University of Auckland / University of Otago / University of Waikato
<b>North America</b>	
<b>Canada</b>	Laurentian University / McGill University School of Continuing Studies / Vancouver Island University / University of British Columbia / University of Montreal / UQAM(Université du Québec à Montréal)
<b>Dominican Republic</b>	Universidad Tecnológica de Santiago
<b>Guatemala</b>	American University of Antigua
<b>Mexico</b>	Universidad Autonoma de Baja California / University of Colima
<b>Puerto Rico</b>	Inter American University of Puerto Rico
<b>U.S.A.</b>	Angelo State University / Augsburg University / Boston University / California State University, Fresno / California State University, Fullerton / California State University, Monterey Bay / California State University, Northridge / Concordia University, Irvine / CUNY Lehman College / Huntington University / Mary Baldwin University / Michigan State University / New York University Steinhardt School / North Park University / Northern Illinois University / Presbyterian College / Saint Mary-of-the-Woods College / Sierra States University / Texas A&M International University / The University of New Mexico / UCLA Extension American Language Center / University of California, Irvine (UCI Extension) / University of Central Missouri / University of Hawaii at Hilo / University of Hawaii at Manoa / University of Houston / University of Idaho / University of Kentucky / University of Mary Washington / University of Minnesota / University of Mississippi / University of Oregon / University of Pennsylvania English Language Programs / University of Wisconsin River Falls / Utah State University / University of Wisconsin, Parkside / Saginaw Valley State University
<b>South America</b>	
<b>Brazil</b>	Universidade de Sao Paulo
<b>Chile</b>	Universidad de la Frontera / Universidad Católica del Maule
<b>Colombia</b>	Pontificia Universidad Javeriana / Tecnológico de Antioquia
<b>Mexico</b>	Nayarit Autonomous University
<b>Uruguay</b>	Catholic University of Uruguay
<b>Venezuela</b>	Fundación del Estado del Sistema Nacional de las Orquestas Juveniles e Infantiles de Venezuela(Fesnojiv)

# Ultimate Personal Styling with K-Beauty



## Department of Beauty Industry



Department of Beauty Industry at Sungshin Women's University is leading the K-beauty industry both in Korea and abroad, with outstanding faculty and education programs in Korea. It is the only beauty industry department in Korea that offers Bachelor's, Master's, and Doctorate courses that strengthen basic skills in wide range of areas related to cosmetics, dermatology, and make-up, and improve practical skills through marketing, trend analysis, and design.

## Short-Term Program Instruction

"Ultimate Personal Styling with K-Beauty" program is supported by the National Institute for International Education (NIIED). Under the theme of K-Beauty Personal Styling, international students will have a chance to learn about overall of K-Beauty (K-Beauty trend, K-Cosmetics, Skin Check-up through AI, Aesthetics, Party Make-up, K-Pop Make-up, and Image Making, etc.) and find the ultimate style that fit them best.

**Period** July 2023 (3-Week Program, exact dates TBA)

**Application Deposit Fee** 100,000 KRW / Non-refundable

### Program Fees

- Early Registration : 3,600,000 KRW

- Final Registration : 4,000,000 KRW

※ Program Fee Invoice will be issued minus the Application Deposit Fee

※ Program Fees include course fees, cost of beauty materials, cost of Korean culture lessons and field trips, accommodation, airport pick-up service, and weekday lunch fees, etc.)

(Round-trip Airfare, expense for obtaining visa, overseas travel insurance, meals(weekday morning & dinner and weekends), and other personal expenses are excluded)

※ Korean Language Courses for 2 weeks duration will take place before the K-Beauty program for any student who wish to participate (Additional cost TBA)





## Registration

**Early Registration** Due by February 28, 2023

**Final Registration** March 1 ~ May 31, 2023

**Qualification** Students who is currently enrolled in high school or have obtained high-school diploma or higher degree

### Required Documents

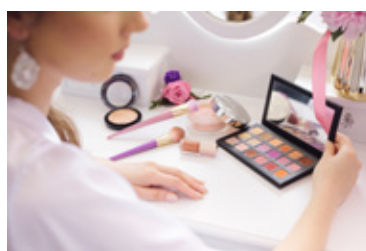
- ① Passport copy ② Proof of enrollment (or Proof of graduation) ③ Official academic transcript ④ Self-introduction ⑤ Study plan ⑥ TOPIK or English proficiency test score (Not mandatory) ⑦ Health Self-check form ⑧ Personal information consent form

- Prepare all documents in Korean or English and upload to Sungshin online application site : <https://tis.sungshin.ac.kr/admi/nxui/member/join.do?join=8>

## Schedule

Day	Time	1st Week	2nd Week	3rd Week
Mon	09:00~12:00	Arrival to Korea, Check-in to dormitory	Lip balm & Aroma perfume making class	K-Beauty Trend Makeup
	14:00~17:00		Traditional Korean Tea Ceremony & Hanbok Experience	Party & K-pop Makeup
Tue	09:00~10:00	Orientation	AI Skin diagnosis and check-up	Aesthetic skin care Know-how
	10:00~13:00	Korean Language Course		
	14:00~17:00	Introduction of K-Beauty trend and K-Cosmetics	Nail Care	Chronological History of Make- up and & taking profile picture (Team teaching)
Wed	09:00~12:00	Korean Language Course	Making Korean Traditional Food 'Bibimbap' Experience	Image Making
	14:00~17:00	Are my cosmetic products suitable for my face?	Aesthetic Class For your clean skin	Hair style production & taking profile picture
Thu	09:00~12:00	Finding your Personal Color Palette	The best makeup and eyebrow shape for me	Making your own avatar & taking profile picture
	14:00~17:00	Personal Color Palette (practical class)	K-Beauty Workshop	Final presentation & Completion Ceremony
Fri	10:00~12:00	K-Culture field trip(Past)	K-Culture field trip(Present)	K-Culture field trip(Future)
	14:00~16:00			
Sat		Free time	Free time	Check-out dormitory
Sun		Free time	Free time	

※ Taught in English or English translation available throughout the whole program



# UNIVERSITY FACILITIES

## Central Library



1F Central Plaza



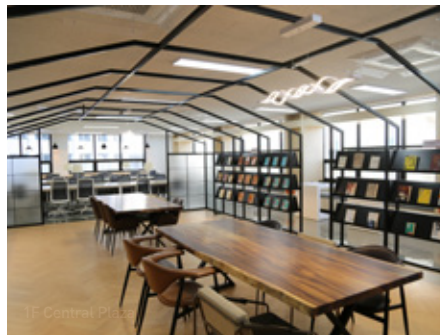
1F Lobby



2F Digital Information Center



1F Automatic Kiosk



1F Central Plaza



1F Study Lounge



3F Focus Room



2F Multimedia Studio



1F Woonjung Garden



2F Collaboration Lounge



3F Sumiru



SWANS CENTER



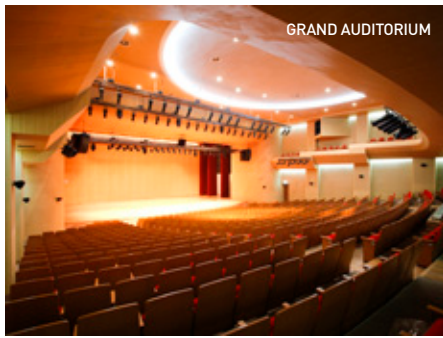
BRICKWALL SOUND STUDIO



ART GALLERY



FLIPPED LEARNING CLASSROOM



GRAND AUDITORIUM



S SQUARE STUDENT CENTER



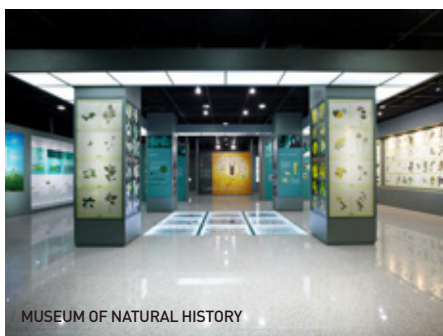
SOOJUNG HALL LOUNGE



SUHARU CAFE



PARK KWANG HOON KOREAN COSTUME MUSEUM



MUSEUM OF NATURAL HISTORY



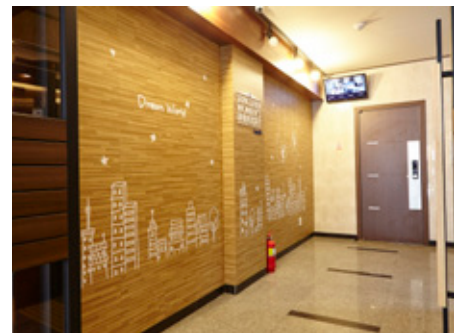
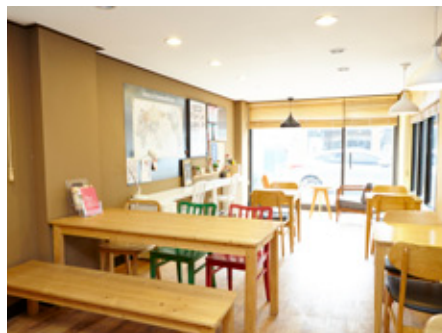
FITNESS CENTER

# Dormitory for International Students

- Dormitories are managed by the university staff to ensure cleanliness and safety.
- Housing available for International Students (Approx. 5 min. away from main campus)

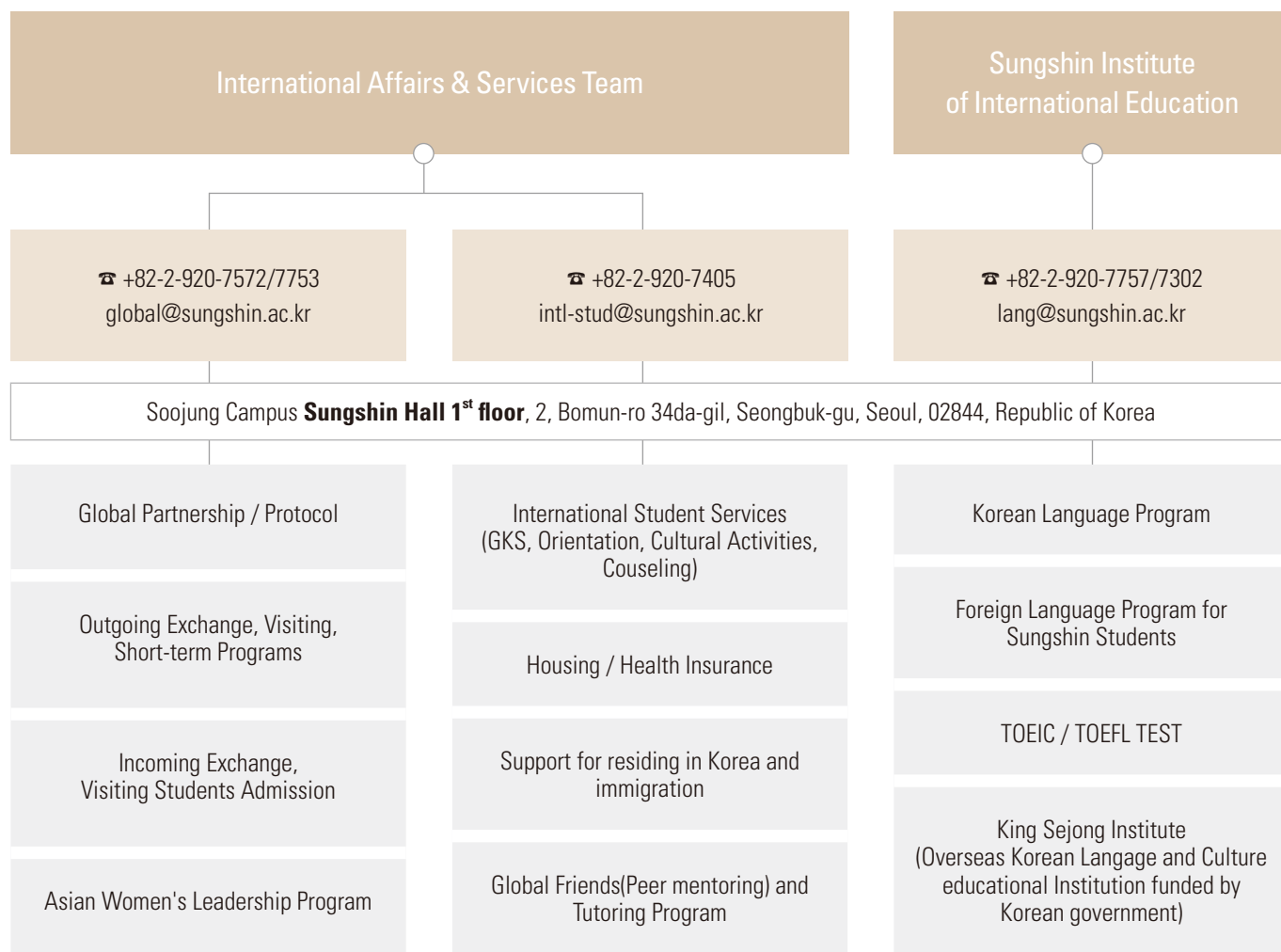
Approximate Monthly Cost *Fees subject to change every semester	Double or Triple Occupancy Units	380,000 KRW
	Quadruple Occupancy Units	330,000 KRW
AMENITIES	Wi-fi, Desk, Closet, Bed, Air conditioner, Kitchen(Refrigerator, Electric Stove, Microwave), Washing Machine	
ADDITIONAL INFORMATION	* Maintenance Fee : 50,000 KRW (Nonrefundable) * Deposit : 100,000 KRW (Returned upon move out, except for the utility bills)	
	* Rooms are assigned by the International Student Services Team	

\* Above information may be subject to change every semester





# Office of International Affairs and Services



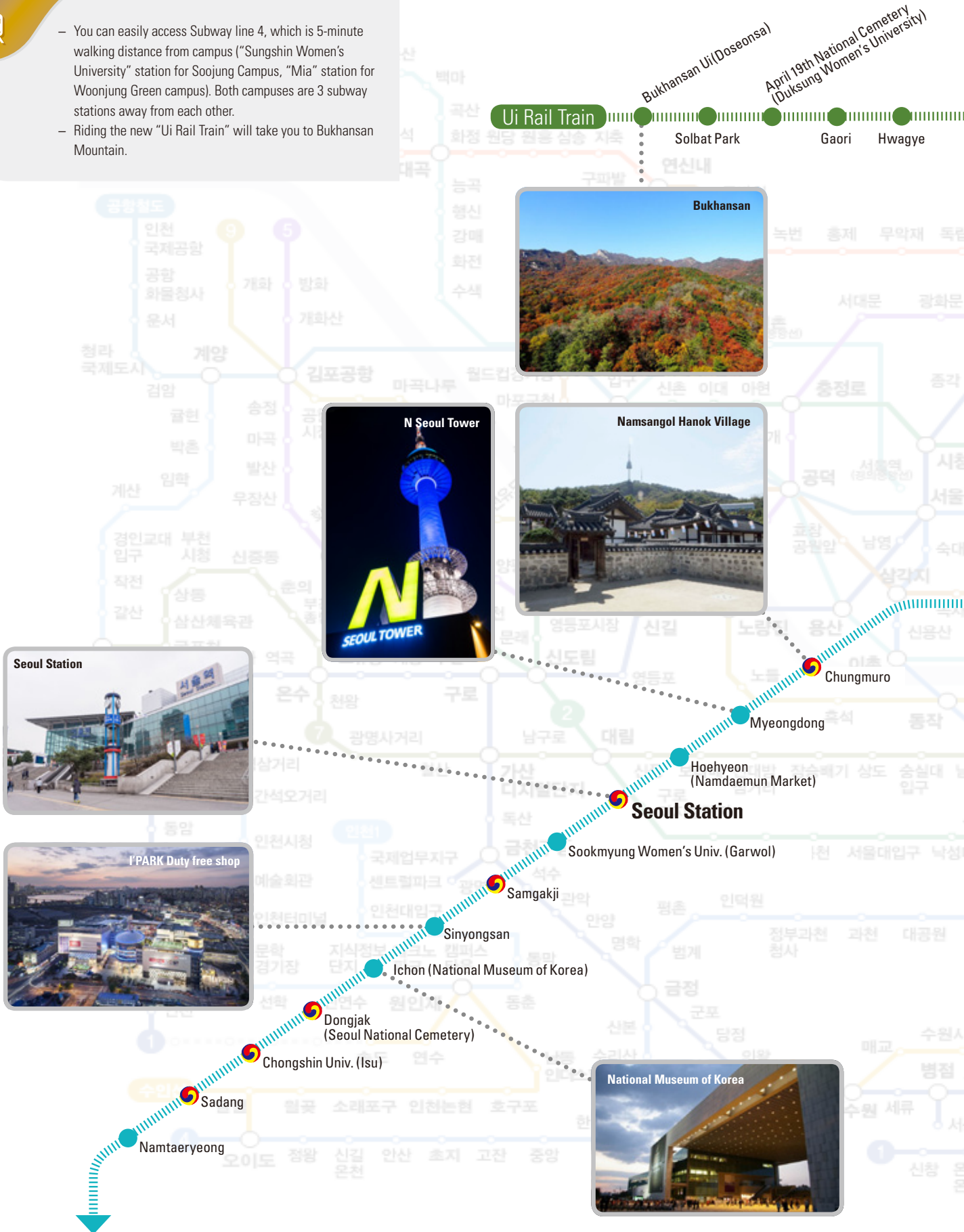
## INTERNATIONAL STUDENTS ADMISSION

Admission	Office	Contact
Undergraduate Admission	Office of Admissions	Tel: 82-2-920-7712
		enter@sungshin.ac.kr <a href="http://ipsi.sungshin.ac.kr">http://ipsi.sungshin.ac.kr</a>
Graduate School Admission	Graduate School	Tel: 82-2-920-7058
		gras@sungshin.ac.kr <a href="http://www.sungshin.ac.kr/gras">http://www.sungshin.ac.kr/gras</a>
Exchange / Visiting Students Admission	International Affairs Team	Tel: 82-2-920-7573
		international@sungshin.ac.kr <a href="http://www2.sungshin.ac.kr/int/index.do">http://www2.sungshin.ac.kr/int/index.do</a>
Korean Language Program Admission	Institute of International Education	02-920-7757, 7789
		lang@sungshin.ac.kr <a href="http://www.sungshin.ac.kr/slc">http://www.sungshin.ac.kr/slc</a>

# SUNGSHIN Campus Accessibility



- You can easily access Subway line 4, which is 5-minute walking distance from campus ("Sungshin Women's University" station for Soojung Campus, "Mia" station for Woonjung Green campus). Both campuses are 3 subway stations away from each other.
- Riding the new "Ui Rail Train" will take you to Bukhansan Mountain.

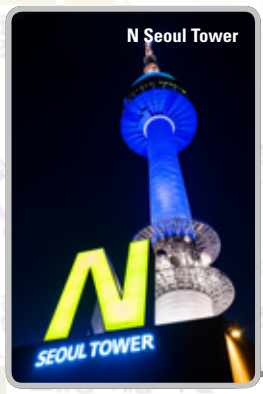


Ui Rail Train

Bukhansan Ui (Doseonsa)  
Solbat Park  
Gaori  
Hwagye  
April 19th National Cemetery (Duksung Women's University)



Bukhansan



N Seoul Tower



Namsangol Hanok Village



Seoul Station



I'PARK Duty free shop



National Museum of Korea

# 1<sup>st</sup> Campus

SOOJUNG CAMPUS

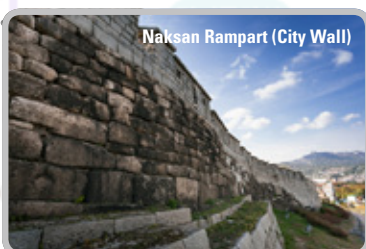
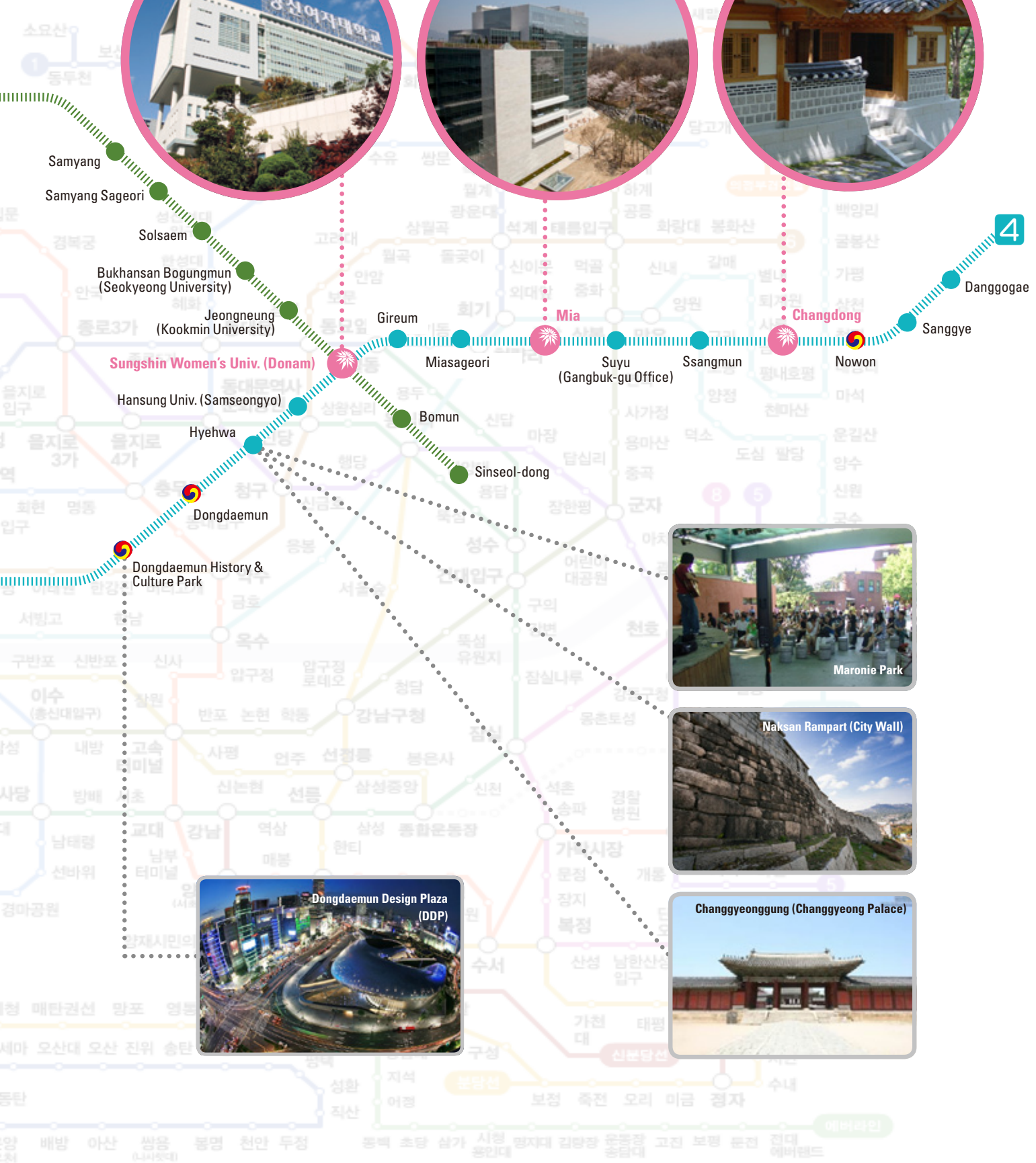


# 2<sup>nd</sup> Campus

WOONJUNG GREEN CAMPUS



NANH YANG CAMPUS





**SUNGSHIN WOMEN'S UNIVERSITY**  
**OFFICE OF INTERNATIONAL AFFAIRS**

**SOOJUNG CAMPUS** 2, Bomun-ro 34da-gil, Seongbuk-gu, Seoul, 02844, Republic of Korea  
**TEL** +82-2-920-7573, 7572 (ENGLISH) +82-2-920-7753 (CHINESE) +82-2-920-7573 (JAPANESE)  
**E-MAIL** [global@sungshin.ac.kr](mailto:global@sungshin.ac.kr) **HOME PAGE** [www.sungshin.ac.kr](http://www.sungshin.ac.kr)